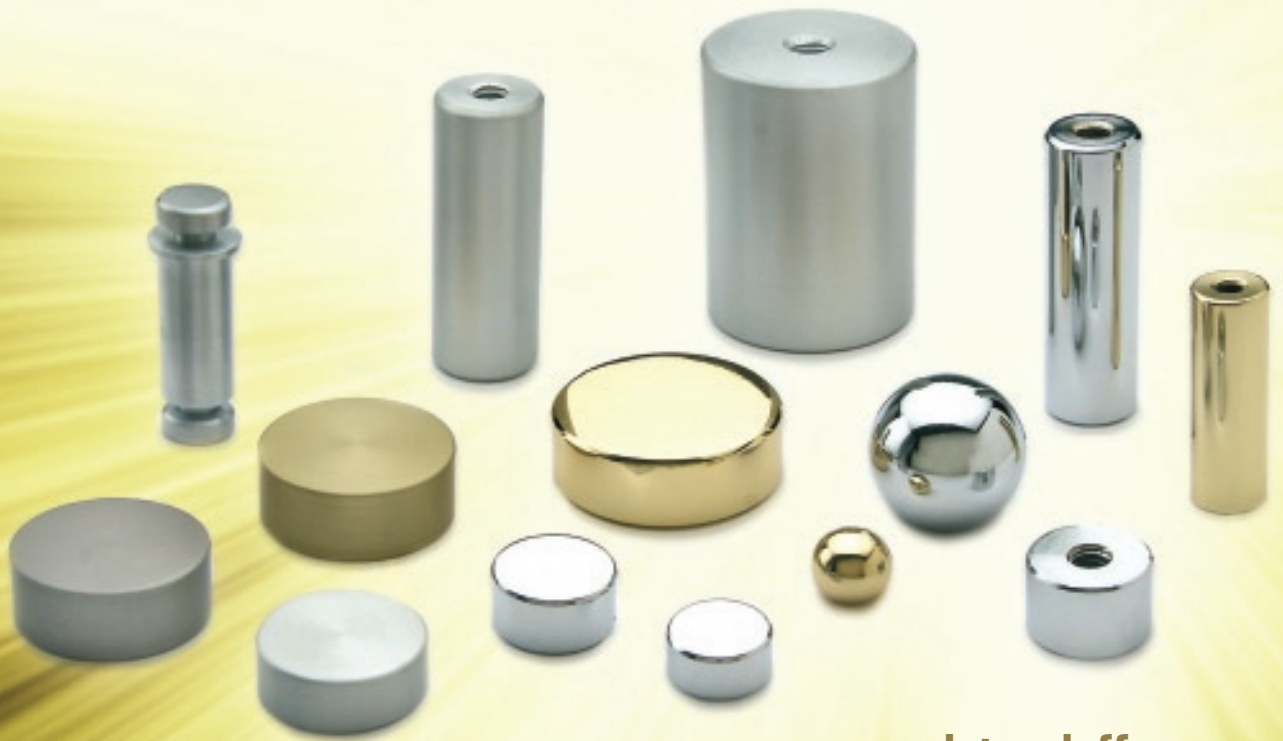


**CAPS AND
STANDOFFS**

METOMIC
CORPORATION



www.capsandstandoffs.com

ALL PARTS ARE AVAILABLE IN POLISHED CHROME OR BRUSHED ANODIZED ALUMINUM

3/8" Diameter Caps and Standoffs

← 3/8" →
Dia. Cap



PART # THREAD
CAP37510 10/24

← 3/8" →
Dia. Standoff



LENGTH

PART # LENGTH THREAD
SO37510-1/2 1/2" 10/24
SO37510-1 1" 10/24



1/2" Diameter Caps and Standoffs

← 1/2" →
Dia. Cap



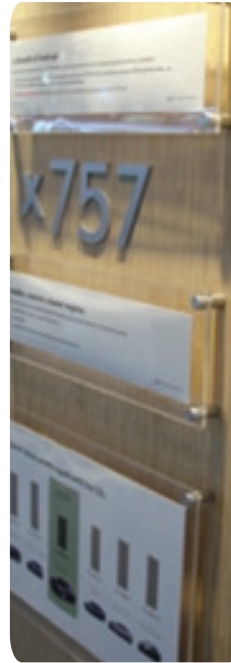
PART # THREAD
CAP50010 10/24
CAP50025 1/4 - 20

← 1/2" →
Dia. Standoff



LENGTH

PART # LENGTH THREAD
SO50010-1/2 1/2" 10/24
SO50025-1/2 1/2" 1/4 - 20
SO50010-3/4 3/4" 10/24
SO50025-3/4 3/4" 1/4 - 20
SO50010-1 1" 10/24
SO50025-1 1" 1/4 - 20
SO50010-1 1/2 1-1/2" 10/24
SO50025-1 1/2 1-1/2" 1/4 - 20



5/8" Diameter Caps and Standoffs

← 5/8" →
Dia. Cap



PART # THREAD
CAP62525 1/4-20
CAP62531 5/16-18

← 5/8" →
Dia. Standoff



LENGTH

PART # LENGTH THREAD
SO62525-1/2 1/2" 1/4-20
SO62531-1/2 1/2" 5/16-18
SO62525-3/4 3/4" 1/4-20
SO62531-3/4 3/4" 5/16-18
SO62525-1 1" 1/4-20
SO62531-1 1" 5/16-18
SO62525-1 1/2 1-1/2" 1/4-20
SO62531-1 1/2 1-1/2" 5/16-18
SO62525-2 2" 1/4-20
SO62531-2 2" 5/16-18



3/4" Diameter Caps and Standoffs

← 3/4" →
Dia. Cap



PART # THREAD
CAP75025 1/4-20
CAP75031 5/16-18

← 3/4" →
Dia. Standoff



LENGTH

PART # LENGTH THREAD
SO75025-1/2 1/2" 1/4-20
SO75031-1/2 1/2" 5/16-18
SO75025-3/4 3/4" 1/4-20
SO75031-3/4 3/4" 5/16-18
SO75025-1 1" 1/4-20
SO75031-1 1" 5/16-18
SO75025-1 1/2 1-1/2" 1/4-20
SO75031-1 1/2 1-1/2" 5/16-18
SO75025-2 2" 1/4-20
SO75031-2 2" 5/16-18



ADDITIONAL SIZES AVAILABLE UPON REQUEST - MINIMUM QUANTITIES DO APPLY

ALL PARTS ARE AVAILABLE IN POLISHED CHROME OR BRUSHED ANODIZED ALUMINUM

1" Diameter Caps and Standoffs

← 1" →
Dia. Cap

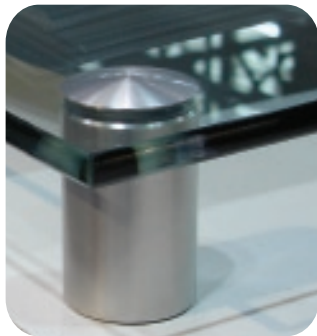


PART # THREAD
CAP10025 1/4 - 20
CAP10031 5/16-18

← 1" →
Dia. Standoff



PART #	LENGTH	THREAD
SO10025-1/2	1/2"	1/4 - 20
SO10031-1/2	1/2"	5/16 - 18
SO10025-3/4	3/4"	1/4 - 20
SO10031-3/4	3/4"	5/16 - 18
SO10025-1	1"	1/4 - 20
SO10031-1	1"	5/16 - 18
SO10025-1 1/2	1-1/2"	1/4 - 20
SO10031-1 1/2	1-1/2"	5/16 - 18
SO10025-2	2"	1/4 - 20
SO10031-2	2"	5/16 - 18



1-1/4" Diameter Caps and Standoffs

← 1-1/4" →
Dia. Cap

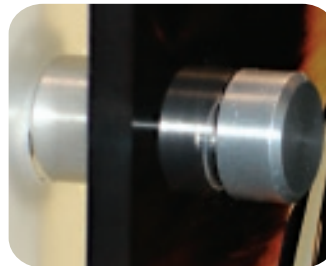


PART # THREAD
CAP12531 5/16 - 18

← 1-1/4" →
Dia. Standoff



PART #	LENGTH	THREAD
SO12531-1/2	1/2"	5/16 - 18
SO12531-3/4	3/4"	5/16 - 18
SO12531-1	1"	5/16 - 18
SO12531-1 1/2	1-1/2"	5/16 - 18
SO12531-2	2"	5/16 - 18



1-1/2" Diameter Caps and Standoffs

← 1-1/2" →
Dia. Cap

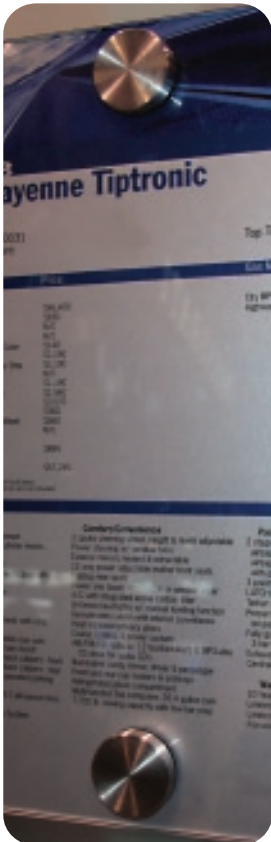


PART # THREAD
CAP15031 5/16 - 18

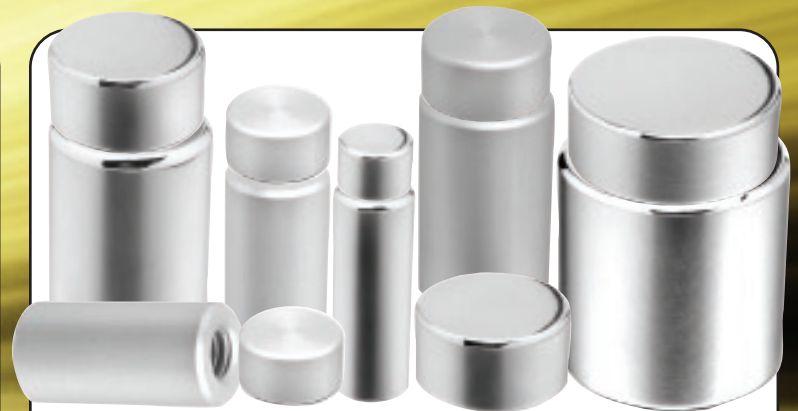
← 1-1/2" →
Dia. Standoff



PART #	LENGTH	THREAD
SO15031-1	1"	5/16 - 18
SO15031-2	2"	5/16 - 18



UNDERSTANDING PART NUMBERS



CAP = CAP SO = STANDOFF

CAP
CAP37510A
3/8" DIA. 10-24 Thread Aluminum

- Diameter = 375 = 3/8
- Diameter = 500 = 1/2
- Diameter = 625 = 5/8
- Diameter = 750 = 3/4
- Diameter = 100 = 1"
- Diameter = 125 = 1 1/4
- Diameter = 150 = 1 1/2

3/8" DIA. 1" Lg.
SO375101C
STANDOFF 10-24 Thread Chrome

- Thread = 10 = 10-24
- Thread = 25 = 1/4-20
- Thread = 31 = 5/16-18

SAME DAY SHIPPING AVAILABLE 800-847-8342



2944 West 26th Street Chicago, IL 60623
773-247-4716 • 800-847-8342 • Fax: 773-247-2563
E-mail: sales@metomic.com • www.capsandstandoffs.com

2007